

镭射贴



FS 6
Siemens AG Gleiswitzer Str 555
DE-90475 Nuremberg
Made in Germany

APPROVED
CL.I, DIV.2, GP, A, B, C, D, T4
CL.II, Zone 2, GP, IIC, T4
II 3 G Ex na IIC T4 Gc
KEMA 02 ATEX 1098X

UL
UL LISTED 30A1
IND. CONT. EQ. for HAZLOC:
CL.I, DIV.2, GP, A, B, C, D, T4A
CL.II, Zone 2, GP, IIC, T4
SUPPLY 24VDC, 750mA



23S 00-1B-1B-6B-B1-D8

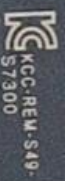


SIEMENS

SIMATIC S7-300 CPU

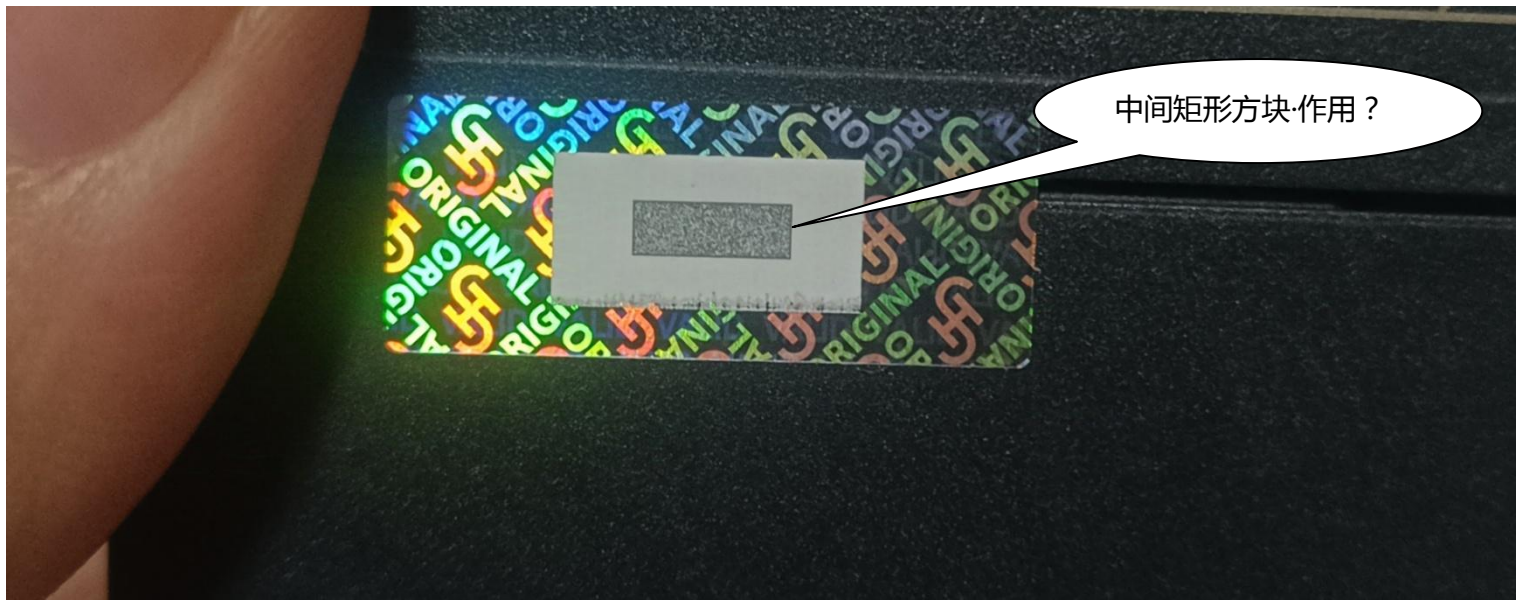
1P 6ES7 315-2EH14-0AB0

S-C-NNV52089 2021



EHL

Ta: 0°C...+50°C
Not mounted
0°C...+40°C
Vertically mounted



中间矩形方块·作用?

